

QOPCC Men's Fellowship Weekend Friday-Saturday October 5-6th 2012 John Kyle State Park Sardis MS

We will start out Friday evening with check in, dinner, fellowship, and a **Poker Tournament**. Lodging is included. On Saturday morning we will have a **Bass Fishing Tournament** starting at 6:30 am. If you don't bass fish you may hang out for breakfast, lunch, and fellowship. There is also Mallard Point Golf Course near by offering us a discounted rate if we have enough people interested in playing a round of golf. There are hiking trails, recreational fishing and boating as well.

Base price is \$50 per person which includes 3 meals, lodging and a chance to get to know your fellow parishioners and there guest. You must provide your own linens and bath needs. Each QOPCC parishioner may bring one guest. Due to the bunkhouse style sleeping arrangements this is an all male event. There is an 80 person limit on the lodging so sign up ASAP.

The **Poker Tournament** will start Friday evening at 7pm following dinner. Entry fee is an additional \$10 per person which will go toward buying prizes. The game is **Texas Hold'Em** this will consist of 3 one hour rounds. 1st place prize is a poker chip set valued at around \$500. All prizes will be noncash.

The **Team Bass Tournament** check-in is Saturday morning 5-6:30am, you will start fishing at 6:30, weigh-in is at 3pm. Entry fee is \$100 per 2 man team. One entrant in each boat must be a QOPCC Parishioner and/or over 18. There will be door prizes given out at the weigh-in while you wait for the results. All entry money will be paid out at the rate of 1 place per 5 boats.

Sample pay out based on 15 boats 1st \$700, 2nd \$500, 3rd \$300

Entry Form must be filled out and signed
 Name Entrant 1 _____
 Phone # _____
 Name Entrant 2 _____
 Phone # _____

Nights Stay	\$50 x _____ = \$ _____
Poker Tournament	\$10 x _____ = \$ _____
Bass Tournament Team	= \$100.00
Package for 2	= \$200.00
Total Paid	= \$ _____

I have read, understand and agree to all the rules and regulations. Entries must be submitted by 9-21-2012
 Rules are located on the reverse side of this form or at QOPCC.Com

Signature Entrant 1 _____

Signature Entrant 2 _____

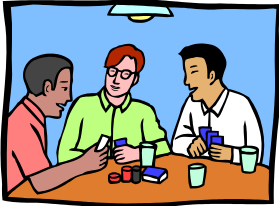
Contact Tracy Lindsey with any Questions and/or entry forms 901-828-4848 or tdellindsey@aol.com

BASS TOURNAMENT RULES

- State, Federal, and Local Laws must be obeyed.
- Entry Fee is \$100.00 per team. Checks or money orders are preferred (payable to QOPCC Men's Club).
- Alcohol and Narcotics will not be allowed in the possession of contestants during tournament hours, unless prescription medicine.
- Courtesy, Safe Boating, Sportsmanship and Conservation must be displayed at all times by contestants. A U.S. Coast Guard approved chest type PFD must be on and fastened anytime the combustion engine is in gear.
- All fishing must be done with artificial lures only. Pork is permitted. Only one rod and reel may be used at a time by contestants. No trolling with the combustion engine is allowed. All fish must be caught in a legal and sporting manner during tournament hours from tournament waters. Contestants may not use any communication or video device for the sole purpose of locating or catching bass during tournament hours. Tracking devices inserted in bass may not be used by any contestant during or before the Tournament.
- Off limits period of the lake for fishing, scouting, or locating bass will be as follows: There is no official off limits to paid entries, however you must pay your entry before pre fishing two weeks prior of the tournament. (Any one found in violation of this rule may be disqualified).
- Boats must have an operational live well with an aeration system. Teams may keep no more than 5 bass in the live well at one time; teams must cull immediately upon catching a 6th fish.
- Scoring will be determined by the total weight of not more than 5 bass (largemouth, or spotted bass) per team meeting lake size requirements (over 12"). Fish will be measured on golden rule with the mouth closed. Ties for cash prizes will be settled by combining two cash awards and splitting the total between tied teams.
- No fishing is allowed within 50 yards of another tournament boat which is anchored, with trolling motor up (in a stored position), or 25 yards of another tournament boat without mutual consent, permission may not be granted to any team at the exclusion of any other team. No tube, bank, or wade fishing is allowed. Hole-Sitting by or for entrants is not allowed. (Violators will have their catch disqualified).
- Trailering to and from the weigh-in during tournament hours is not allowed, unless permitted by the Tournament Director for safety or emergency reasons. Competitors shall remain with their partners in the boat at all times during the tournament. (exception's being nature's calling and extreme weather) If for any reason, a team decides to leave the tournament waters early; both members shall bear responsibility for notifying a tournament official. In case of breakdown, one partner may return with their catch by another tournament boat, while the other partner is permitted to stay with the disabled boat. All fishing must be from a previously inspected boat.
- QOPCC Men's Club allows no more or less than two persons per boat. All persons in a boat must be a registered contestant. There must be at least 1 adult per boat.
- Teams will receive boat I.D. numbers in the order entry is received.
- Tournament Hours will be 6:30 A.M. to 3:00 P.M. Only Engineers Point boat ramp may be used. All live wells must be checked the morning of the tournament. Weigh bags will be supplied at weigh-in.
- Fishing Guides who have guided for black bass on tournament lakes during (60 days) prior to tournament will not be eligible to compete. Tournament Director reserves the right to refuse entry of any person.
- Upon entering this fishing tournament, contestants release QOPCC Church, Men's Club and sponsors from liability of accidents, losses or thefts. Contestants are responsible for knowing and understanding these rules.
- Penalties: There will be a 0.5 pound penalty deducted for each dead fish weighed-in. There will be a one (1) pound penalty deducted for any fish not meeting the predetermined size requirement brought to the scales, plus, a loss of same fish. Competitors not checked in by tournament deadline will be penalized at a rate of 1 pound per minute, up to 15 minutes at which they will be disqualified.
- Weigh-in will be on a first come first served basis, once fish have been weighed they become the property of tournament officials and all live fish will be returned to the lake.
- Failure to follow any of the above rules will be grounds for disqualification.

POKER TOURNAMENT RULES

- All players will act in a courtesy sportsman like manner. Any pour behavior will be cause for elimination.
- The dealers will have the last say on any disputes. Any continued argument after dealer's decision will be cause for elimination. A dealer will be assigned to each table or decided by a high card draw.
- Entry fee is \$10 per person.
- Each person will be supplied with an equal bag of chips. The chips will represent \$10, \$25, \$50, & \$100 each.
- There will be 3 one hour rounds with a 15 minute break between each round.
- In each round there will be a \$10 Annie, 1st round there will be a \$25 bet limit with one raise allowed per bet, 2nd round limit will be \$50 with the one raise allowed, 3rd round there will be no limits
- In the event of a tie the pot will be split equally. A grand prize tie would be settled by a high card draw.
- The grand prize winner will be the entrant with the most \$ at the end of the 3rd round



Poker/Bass Tournament Sponsorship Opportunity

The Queen of Peace Catholic Church Men's Club in Olive Branch Ms. is hosting a fellowship weekend Oct. 5th-6th 2012 @ John Kyle State Park in Sardis Ms. It will consist of a poker tournament and a bass fishing tournament. We would like to offer you the opportunity to advertise your business by sponsoring this event. We will have a link on QOPCC.COM from the time you turn in your sponsorship slip through the event date, we will post a sponsorship list next to our entry forms in our parish entryway for 2 months prior to the event, place the list in our weekly bulletin for several weeks surrounding the event, and post the list during the event. You will be advertising to the 1,000 parishioners that attend Mass each week, all the guest of our parishioner entrants, and we will be sending out a parish wide e-mail advertising the event and its sponsors to all our 3,000 parishioners.

Event Sponsorship: suggestions are \$100.00 cash or store gift certificates to purchase door prizes and/or supplies with, store discount cards/certificates, meal certificates, poker chips, cards, fish weigh-in bags, table top digital scales to weigh fish on, 12 staff tee shirts, etc.

Bass Tournament Sponsorship:

Suggestions are pairs of door prizes (rods, reels, combos, packs of lures, tackle, clothing, etc.),

Poker Tournament Sponsorship:

Suggestions are single door prizes (poker chip sets, cards, card shuffler, clothing, etc.)

My business _____ is interested in sponsoring your event with

Please check one of the following:

- You may pick up my donation date _____ location _____
- I submitted my donation with this form

My sponsorship advertisement should show the following information (please print)

Signature and phone # of representative _____

Please contact or Director Tracy Lindsey by phone 901-828-4848 by e-mail tdellindsey@aol.com for more information, with questions, or with sponsorship acknowledgement.

Make checks payable to Queen of Piece Catholic Church 8455 Germantown Rd. Olive Branch Ms. 38654